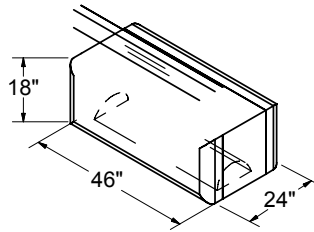


Perimeter Free-Standing Series (Finished on two sides)

Straight

Full (46")
10.46 Cft
1496 Lbs +/-

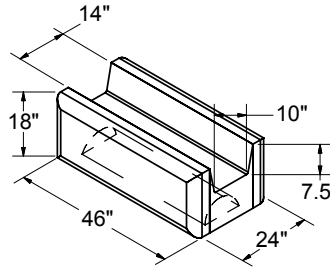
Half (23")
5.22 Cft
747 Lbs +/-



**Top -
Smooth or
Textured**

Full (46")
7.98 Cft
1141 Lbs +/-

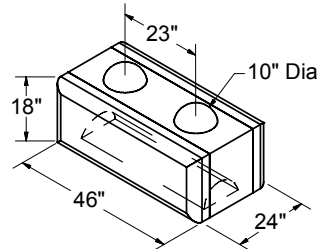
Half (23")
3.97 Cft
567 Lbs +/-



**Top -
Garden**

Full (46")
10.68 Cft
1527 Lbs +/-

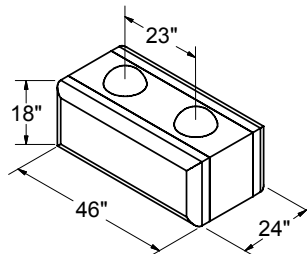
Half (23")
5.33 Cft
762 Lbs +/-



Middle

Full (46")
11.53 Cft
1649 Lbs +/-

Half (23")
5.74 Cft
821 Lbs +/-



Bottom

Volume based on block as shown. Actual weights and volumes may vary due to face design. Weight based on 143#/Cft concrete.

DRAWN RRI	1/9/2007	Redi-Rock International	
CHECKED		DWG NO Block Specs 4 - FS Series.idw	REV
APPROVED		SCALE	SHEET 1 OF 1